

# State of Wyoming Corner Record

(In compliance with the CORNER PERPETUATION AND FILING ACT, Wyoming Statutes, 1997 Section 33-29-140 et. seq, and the Rules and Regulations of the Board of Professional Engineers and Professional Land Surveyors)

Reverse side of this form may be used if more space is needed.

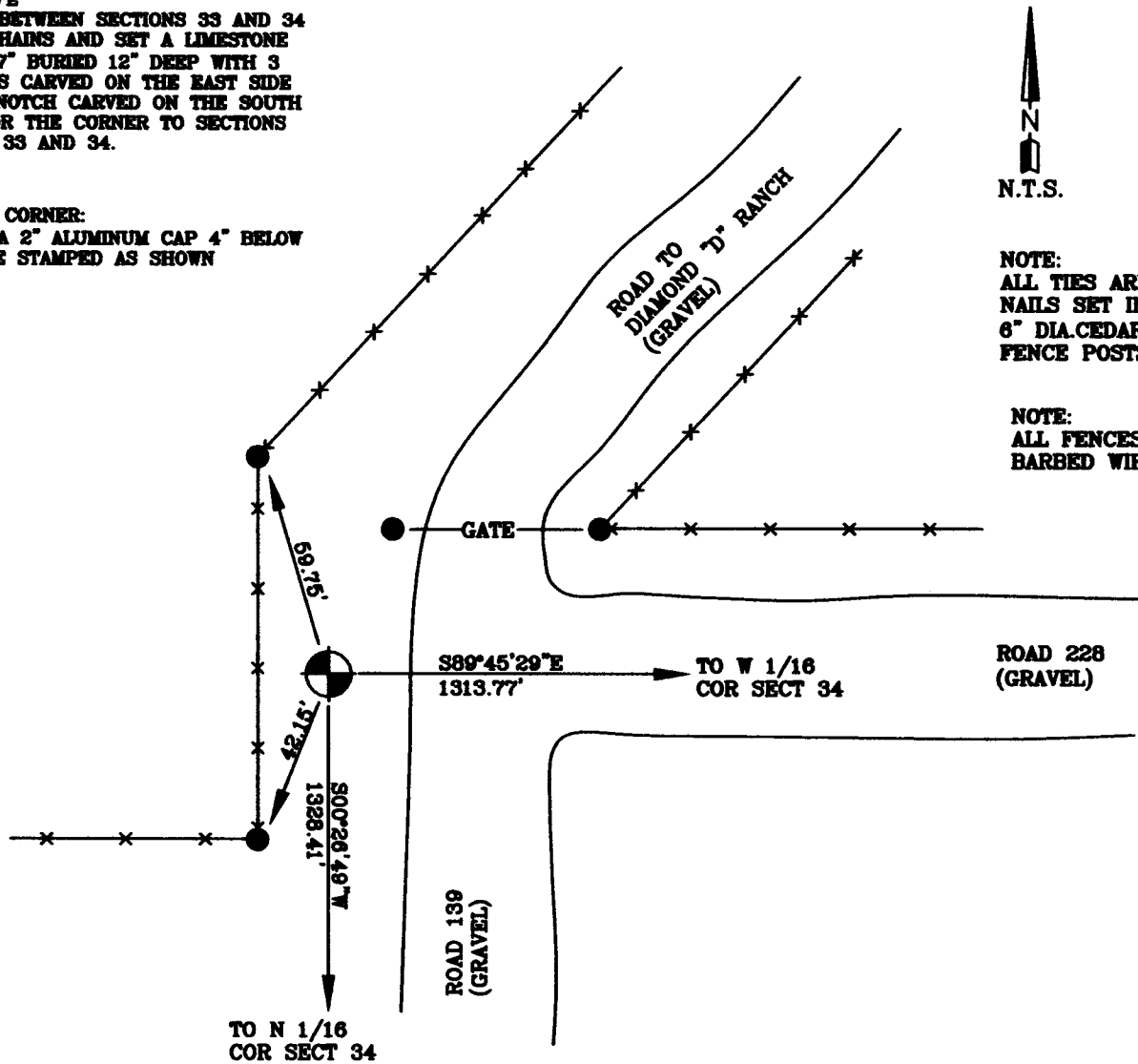
Record of original survey and citation of source of historical information (if corner is lost or obliterated). Description of corner monumentation evidence found and/or monument and accessories established to perpetuate the location of this corner. Sketch of relative location of monument, accessories, and reference points with course and distance to adjacent corner(s) (if determined in this survey). Method and rationale for reestablishment of lost or obliterated corner.

**G.L.O. RECORD:**

VA.16\*18\*E  
 NORTH BETWEEN SECTIONS 33 AND 34  
 60.00 CHAINS AND SET A LIMESTONE  
 20"x9"x7" BURIED 12" DEEP WITH 3  
 NOTCHES CARVED ON THE EAST SIDE  
 AND 1 NOTCH CARVED ON THE SOUTH  
 SIDE FOR THE CORNER TO SECTIONS  
 27, 28, 33 AND 34.

**AT THE CORNER:**

FOUND A 2" ALUMINUM CAP 4" BELOW  
 SURFACE STAMPED AS SHOWN



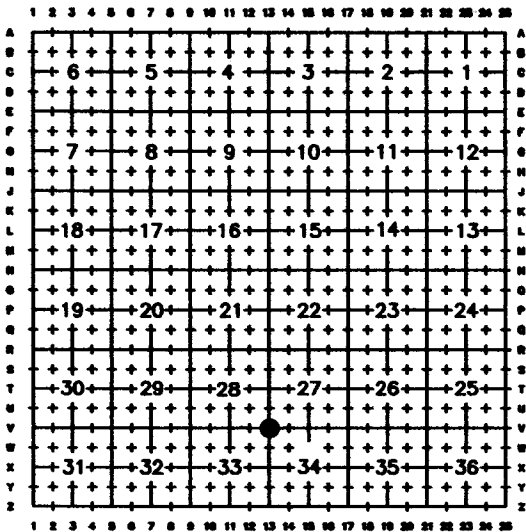
NOTE:  
 ALL TIES ARE P.K.  
 NAILS SET IN  
 6" DIA. CEDAR  
 FENCE POSTS

NOTE:  
 ALL FENCES ARE  
 BARBED WIRE

Date of Field Work: 10/15/06

Office Reference: HUTTON

**Cross Index Plat**



Firm/Agency, Address

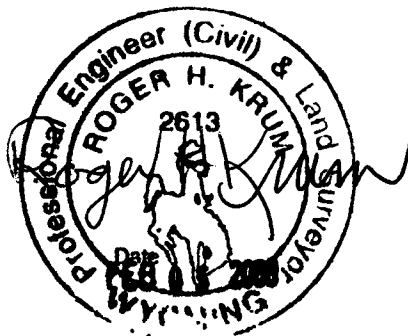
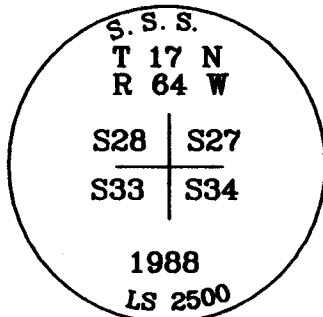
Western R&D, Ltd.  
 5809 Yellowstone Rd, Suite B  
 Cheyenne, Wyoming 82009

This corner record was prepared  
 by me or under my direction  
 and supervision.

SEAL & SIGNATURE

Telephone Number: (307) 632-5656

● Denotes Monument Found



Corner Name NORTHWEST CORNER Section 34, T 17 N, R 64 W, 6th P.M.  
 County: LARAMIE Wyoming  
 SBRPEPLS/PLSW: March 1994; PLSW January 1998

Cross-Index No.: V-13

